

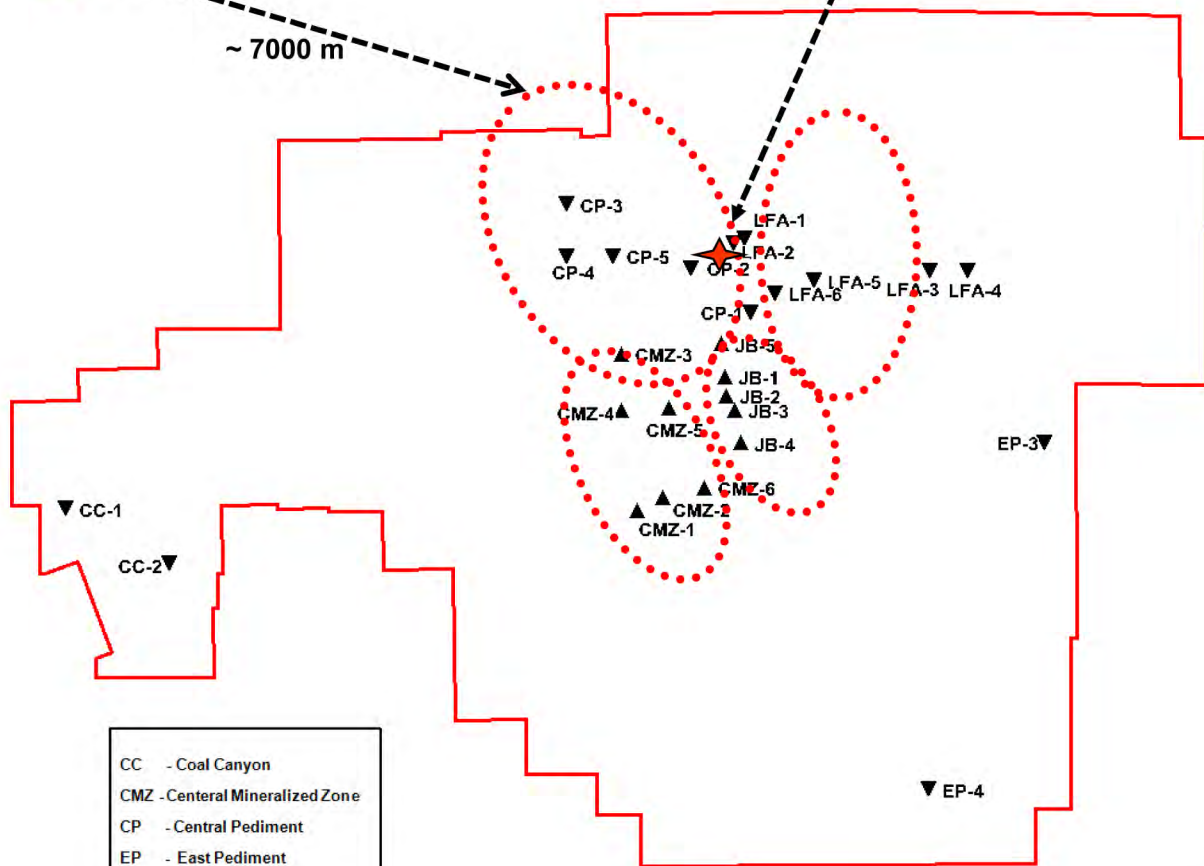
7.0+ million I & I ozs.

Barrick's RH-Goldrush

2012 Drilling Sites on Gold-Bearing 'Carlin' targets on Red Hill Project

BRH-13: 13.7m @ 8.1 g/t Au

~ 7000 m



- CC - Coal Canyon
- CMZ - Central Mineralized Zone
- CP - Central Pediment
- EP - East Pediment
- LFA - Long Fault Area
- JS - Jasperoid Basin

NUG:V
NULGF:Q