






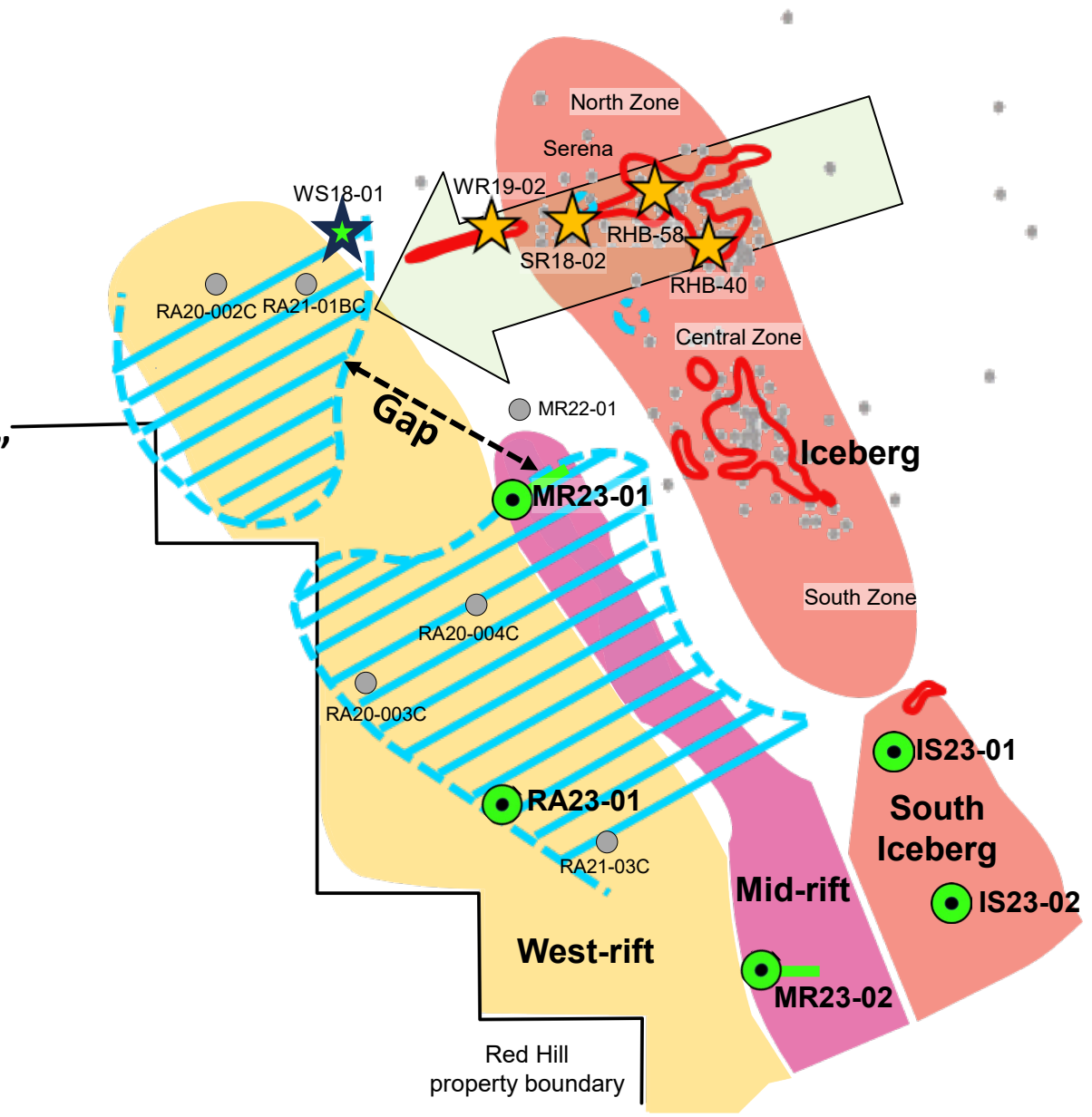
# 2023 drill target plan map

“Deep drilling in West-rift and CSAMT surveys supported projection of ‘thick’ favorable Dw5 horizons into the Mid-rift target...”

Proximity of high-grade in the north Iceberg supports projection into Mid-rift target/s”

**Red Hill Drill map legend**

-  Au occurrences, 0.10 ppm cutoff, ≥ 5 g/t Au
-  Dw5 thickness 50-200 m, west of Iceberg
-  Existing drill hole (includes pre-collars and shallow holes)
-  High grade hits
-  Phase 1 proposed drill site



**Proposed Mid-rift drill hole (dashed green) with target zones in dashed red.**  
Previous drilling in blue

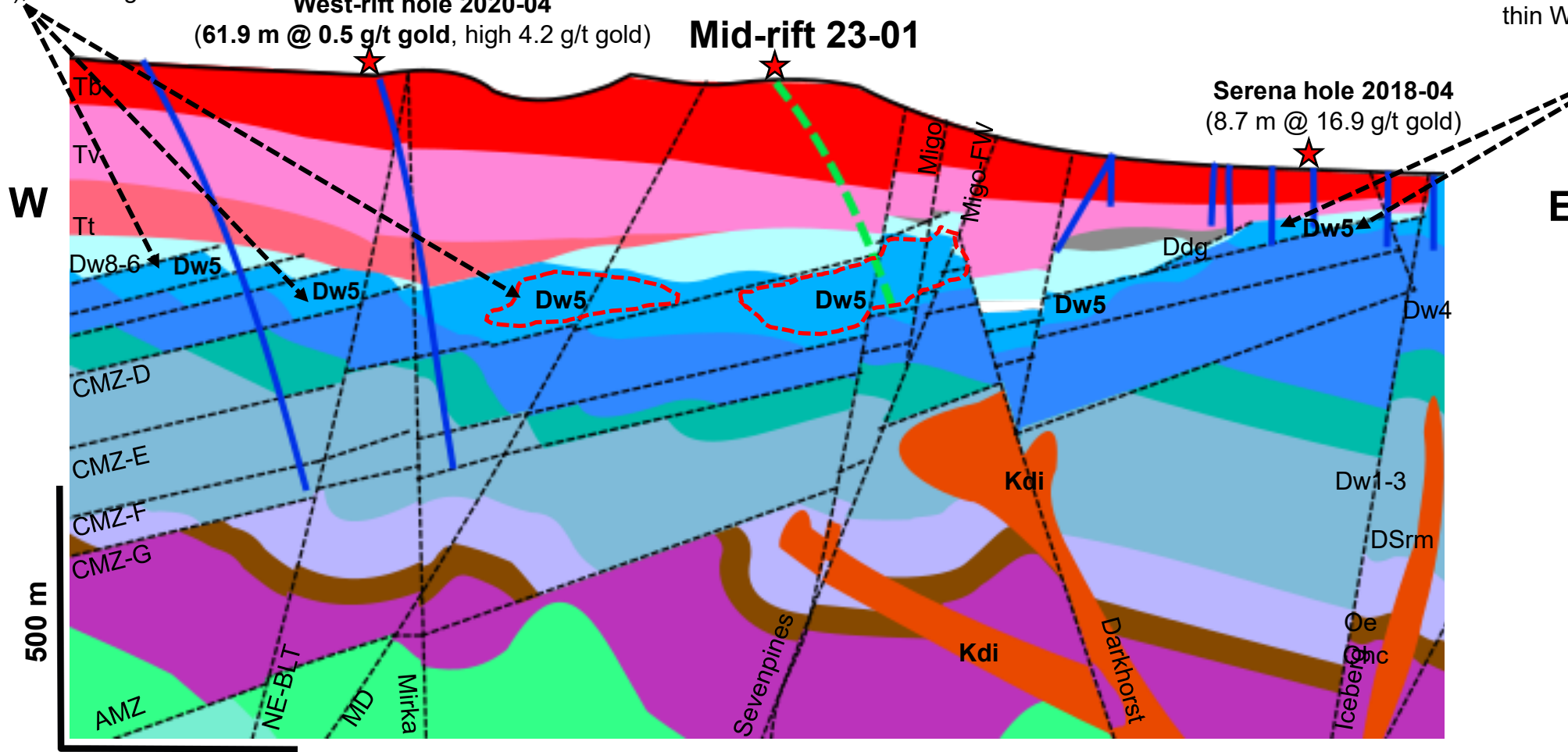
West-rift – drilling confirms thicker Wenban5 (Dw5), modest grades.

**West-rift hole 2020-04**  
(61.9 m @ 0.5 g/t gold, high 4.2 g/t gold)

**Mid-rift 23-01**

Iceberg – drilling confirms thin Wenban5 (Dw5) with ore grades\*

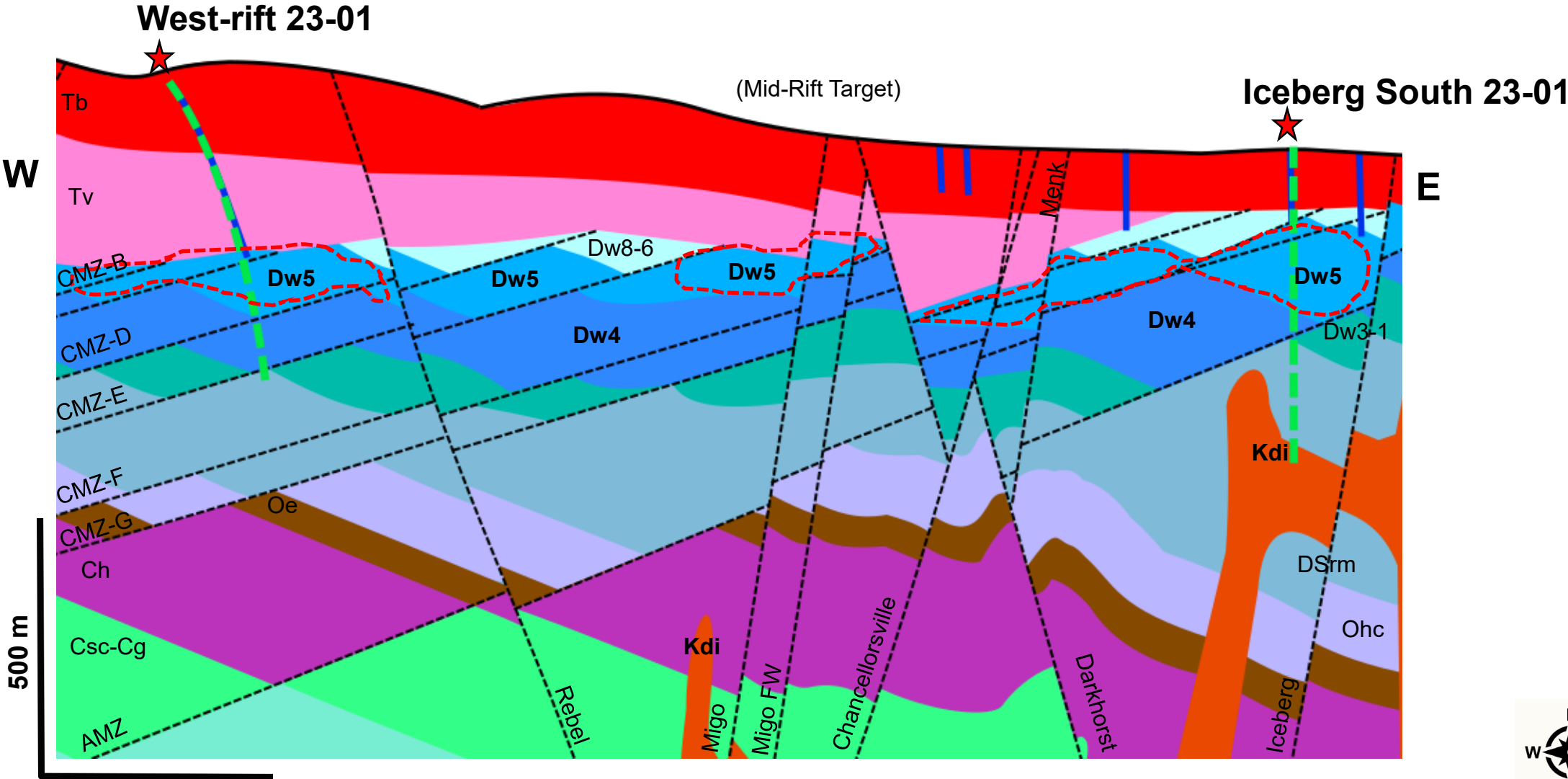
**Serena hole 2018-04**  
(8.7 m @ 16.9 g/t gold)



\* Mineralized material/deposits that are not mineral reserves do not have demonstrated economic viability, are considered too speculative geologically to have the economic considerations applied to them, and may be materially affected by environmental, permitting, legal, title, socio[1]political, marketing, and other relevant issues.”.

# Central cross-section – WR23-01 and IS23-02

Proposed West-rift and South Iceberg drill holes (dashed green) with target zones in dashed red.



Proposed Mid-rift and South Iceberg drill holes (dashed green) with target zones in dashed red.  
Previous drilling in blue

