



Mid-rift Anticline target

~ a Goldrush analogue ~

NuLegacy Gold

CORPORATION

This presentation provides information in summary form, is not intended to be complete and may contain errors. No representation, warranty or guarantee of any kind, express or implied, is made as to the fairness, accuracy or completeness of information contained in this presentation including the accuracy, likelihood of achievement or reasonableness of any forecasts, prospects, results or statements in relation to future matters. NuLegacy is not liable to any recipient or third party for the use of or reliance on the information contained in this presentation.

This presentation also contains forward-looking information and statements under applicable securities laws, which information and/or statements relate to future events or future performance (including, but not limited to, NuLegacy's interpretation of the Goldrush deposit as an analogue to the Red Hill property, potential continuity of major structures and host rocks and link between gold mineralization and metamorphic alteration at Goldrush and other major deposits in the Cortez Gold Trend to Red Hill, estimated length, width, thickness, structural, and geochemical characteristics and prospective nature of identified targets and stratigraphic horizons including the Rift Anticline targets and Wenban5 horizon, anticipated results from future exploration and drilling programs including the likelihood of making a discovery, the number, location, depth, timing and cost of proposed drill targets and surveys) and potential trends in the price of gold during times of war and reflect management's current expectations and beliefs and are based on assumptions made by and information currently available to the Company. Readers are cautioned that such forward-looking information and statements are neither promises nor guarantees, and are subject to risks and uncertainties that may cause future results to differ materially from those expected including, but not limited to, market conditions, availability of financing, actual results of exploration activities and drilling, unanticipated geological, stratigraphic and structural formations, misinterpretation or incorrect analysis of projected geological structures, alterations and mineralization, environmental risks, operating risks, accidents, labor issues, inability or delays in accessing drill rigs, supplies and/or contractors, delays in obtaining governmental approvals and permits, delays in receipt of assay results from third party laboratories, inflation, future prices for gold, changes in personnel, adverse weather conditions and natural disasters and other risks in the mining industry. In addition, there is uncertainty about the continued spread and severity of COVID-19, the ongoing wars in Ukraine and Gaza, elevated inflation and high interest rates and the impact they will have on the Company's operations, personnel, global supply chains, ability to access properties or procure exploration equipment and contractors on a timely basis and economic activity in general. There are no known resources or reserves at the Red Hill Property and the proposed exploration and drill program is an exploratory search for commercial bodies of ore. In addition, the presence of gold resources on properties adjacent or near the Red Hill Property including Goldrush, is not necessarily indicative of the gold mineralization at the Red Hill Property. All forward-looking information and statements made in this presentation are qualified by these cautionary statements and those in our continuous disclosure filings available on SEDAR+ at www.sedarplus.ca. The forward-looking information and statements in this presentation are made as of the date hereof and the Company does not assume any obligation to update or revise them to reflect new events or circumstances save as required by applicable laws. Accordingly, readers should not place undue reliance on forward-looking information and statements.

Nothing in this presentation constitutes an offer to sell or the solicitation of an offer to buy any security and it is not intended to be relied upon as advice to investors or potential investors, and does not constitute a personal recommendation or take into account the investment objectives, financial situation or needs of any particular investor. NuLegacy's securities have not been and will not be registered under the United States Securities Act of 1933, as amended (the "1933 Act") or any state securities laws and may not be offered or sold within the United States or to, or for account or benefit of, U.S. Persons (as defined in Regulation S under the 1933 Act) unless registered under the 1933 Act and applicable state securities laws, or an exemption from such registration requirements is available.

Dr. Roger Steinger, a director of NuLegacy, is a Certified Professional Geologist (CPG 7417) and the qualified person as defined by National Instrument 43-101, Standards of Disclosure for Mineral Projects, responsible for approving the scientific and technical information contained in this presentation. November 2023



What? Exploring for one of the giants of the gold mining industry...one of the massive 'high-grade' Carlin-style gold deposits of Nevada¹.

Where? Our opportunistically acquired 108 sq. km (42 sq. mile) district scale Red Hill property in the Cortez trend, adjacent² to:

- **three of Barrick Gold Mines' most profitable multi-million-ounce Carlin-type gold mines with their massive 50+ million ounces gold endowment,**
- **that are three of the world's thirty largest, lowest cost, highest grade, and politically safest gold mines, producing ~3% of the world's' gold.**

Who? "Seven of NuLegacy's principals/exploration team-members contributed to/participated in the discovery/expansion of one or more of Nevada's seven massive Carlin-style gold deposits!"

¹There are only seven of these fabulous deposits in the world...four in the Carlin trend (namesake) and three so far in the Cortez trend.

²The similarity and proximity of these deposits in the Cortez Trend including Goldrush are not necessarily indicative of the gold mineralization in NuLegacy's Red Hill Property.

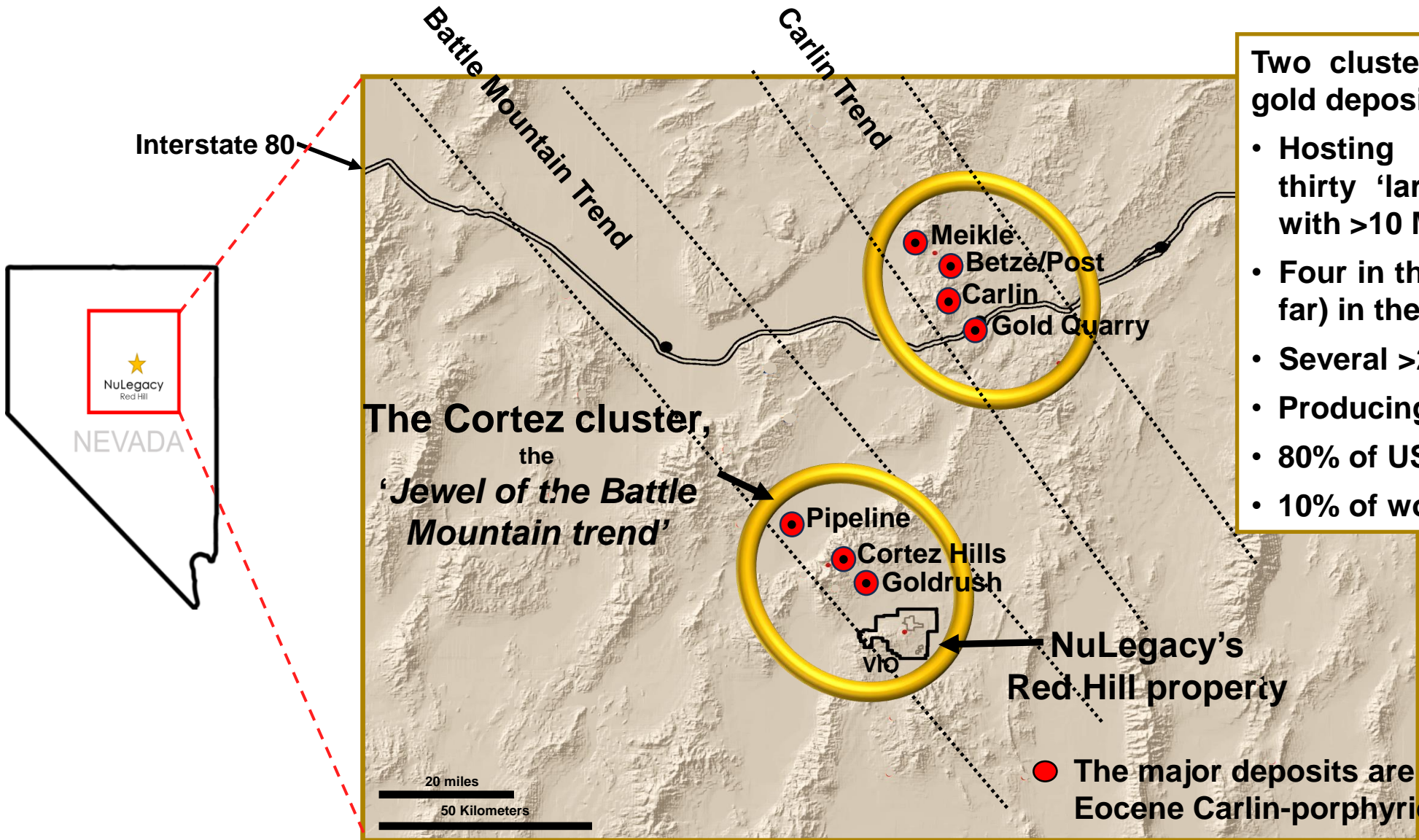


Provide the information and motivation to finance the drilling campaign!

The current opportunity - the Mid-rift:

- **Summary of NUG** Slide 3
- **Goldrush, the analogue for the Mid-rift.** Slide 4
- **World's best location!** Slides 5 and 6
- **The sweet spot.** Slide 7
- **The new guard - dream team.** Slide 8
- **Mid-rift high-grade opportunity.** Slides 9 through 11
- **Drill plan, hole locations/cross-sections.** Slides 12 through 15
- **Meaning of success, funding & responsibility.** Slides 16 through 19
- **Why NuLegacy?** Slide 21
- **Thank you!**



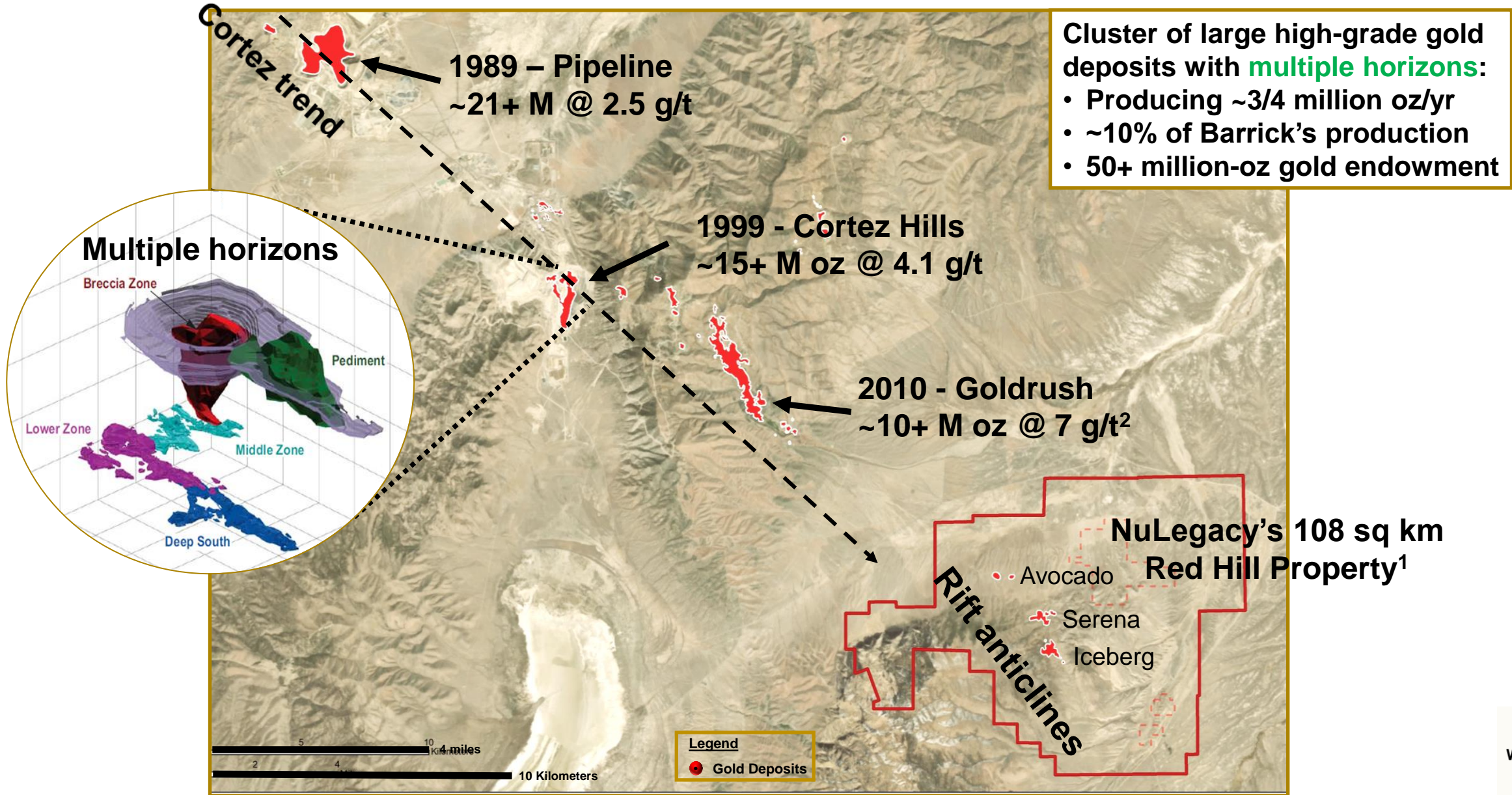


Two clusters of giant Carlin-style gold deposits:

- Hosting seven of the world's thirty 'largest' gold mines each with >10 M oz reserves/resources
- Four in the Carlin trend, three (so far) in the Cortez trend
- Several >20 million oz deposits
- Producing >5.5 million oz/yr
- 80% of US production
- 10% of world production

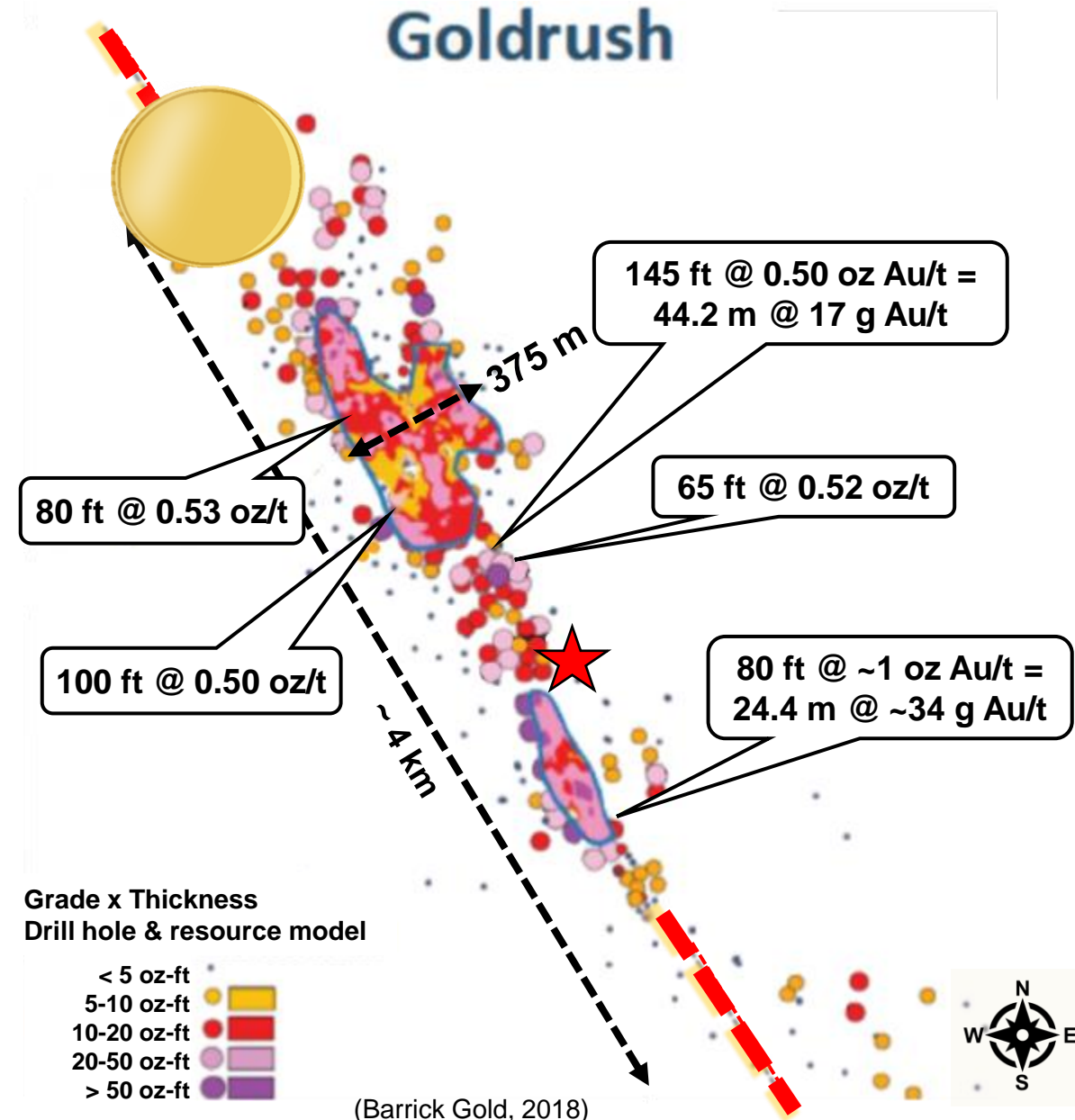


'Carlin-style' giants in the Cortez cluster



The Analogue – the ten-million++ ounce high-grade Goldrush deposit^{1,2}

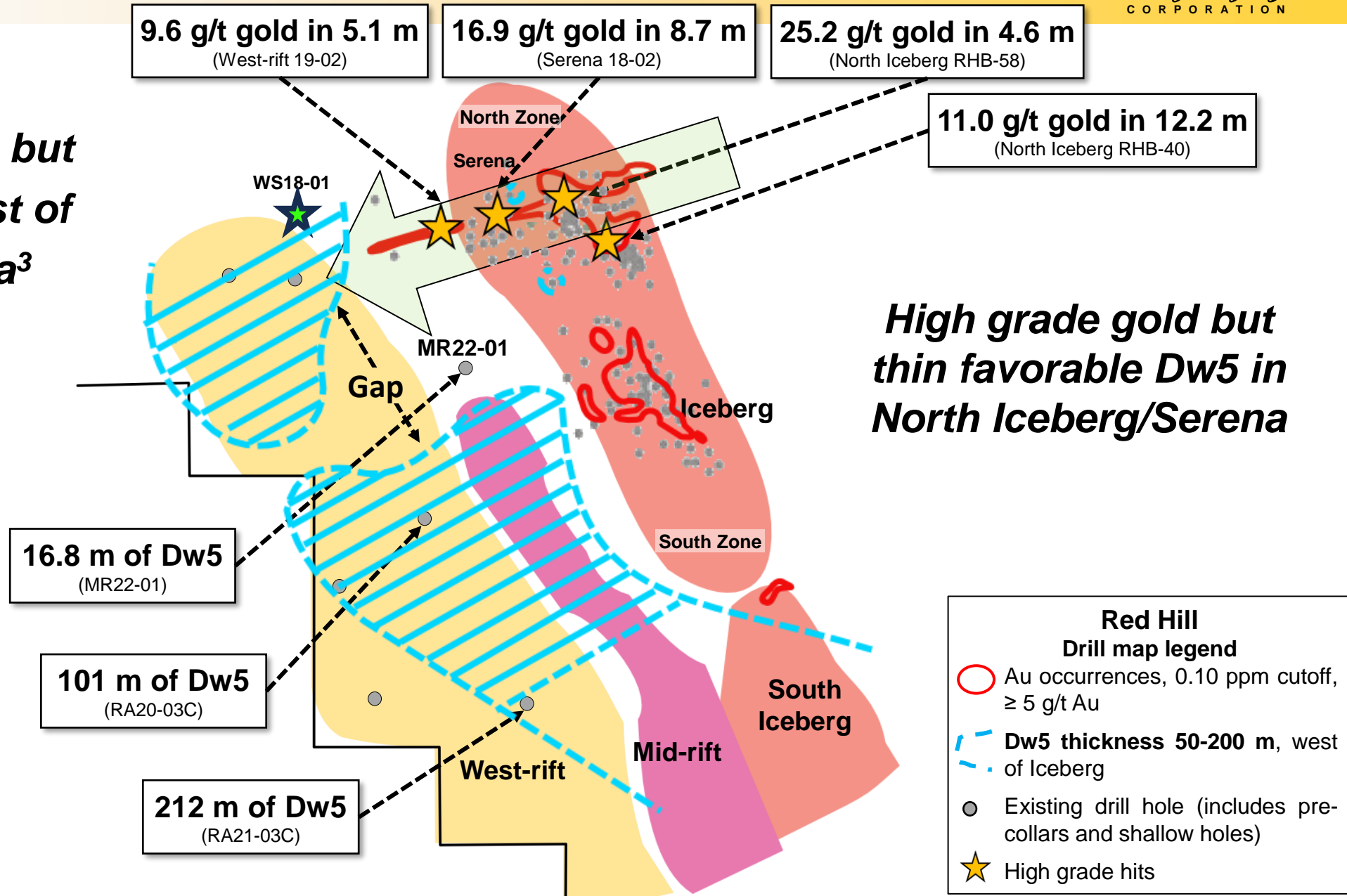
- Directly across the valley on trend with NUG's Red Hill property (10,800 hectares),
- ~ 4 km corridor of highly fractured Wenban5 (Dw5) formation, the most favorable gold bearing horizon in Carlin-type deposits,
- ~ 125 to 375 m wide axial crest; 50 to 75 meters thick Dw5,
- Footprint of ~ 1.2 sq. km (120 hectares/290 acres) of discontinuous 'mineralized' material;
- Exploration progress/resources expansion:
 - Jan 2008 ~ 2.2 million oz
 - Jan 2011 ~ 7.1 million oz
 - Jan 2013 ~ 14.1 million oz
 - Jan 2014 ~ 20+ million oz @ ~ 4 g/t gold open-pit mine,
 - Jan 2016 ~ 10 million oz @ 7 g/t gold when recategorized as underground mine²
- 2024 production targeted at ~ 450,000 oz.



The sweet spot.

Thick favorable Dw5 but modest grades west of Mid-rift target area³

Goldrush 2018, footprint for comparison



High grade gold but thin favorable Dw5 in North Iceberg/Serena

Barrick's Goldrush/Fourmile discovery team:

***Charles Weakly (2018) – Exploration Manager**

With thirty-five years successfully directing all aspects of near-mine exploration activities for Barrick Gold Exploration at the at the Goldstrike mine area, Getchell/Turquoise Ridge and Cortez camps, Charles now leads the search for the next world class gold deposit at our Red Hill property.

***Nancy Richter (2023) – Consulting Team Leader**

A senior member of Barrick Gold's exploration team Ms. Richter spent over twenty-five years exploring and developing Carlin-type gold projects in Nevada. She was Chief Exploration Geologist (CEG) at Turquoise Ridge and Cortez Hills and contributed significantly to the Fourmile discovery.

***Bob Leonardson (2023) – Consulting Geologist**

During his fifty-five-year career Bob Leonardson is credited with numerous discoveries. Joining Barrick in 1992, he developed a unique understanding of the fabulous Goldstrike Mine (Carlin trend); following Barrick's acquisition of Placer Dome, he exported that methodology to the Cortez Trend contributing to the discovery of millions of ounces of gold at Pipeline, Cortez Hills and Goldrush/Fourmile.

***Mike Penick (2023) – Consulting Geologist**

In forty-five years of exploration success, Mike held numerous positions with Barrick and Newmont including Dir. USA Minesite Exploration for the Cortez, Goldstrike, Turquoise Ridge, Bald Mountain and Ruby Hill properties and contributed significantly to the Goldrush discovery.

***William Mounts (2018) – Drilling Supervisor**

With over sixty years with Newmont and Barrick Gold, Bill is credited with saving millions of dollars in drilling expenses while participating in the discovery of numerous of their largest gold mines.

***Five (of the seven) NuLegacy principals & geo-team who were instrumental in the discovery/expansion of one or more of Nevada's seven Carlin-style gold deposits.**

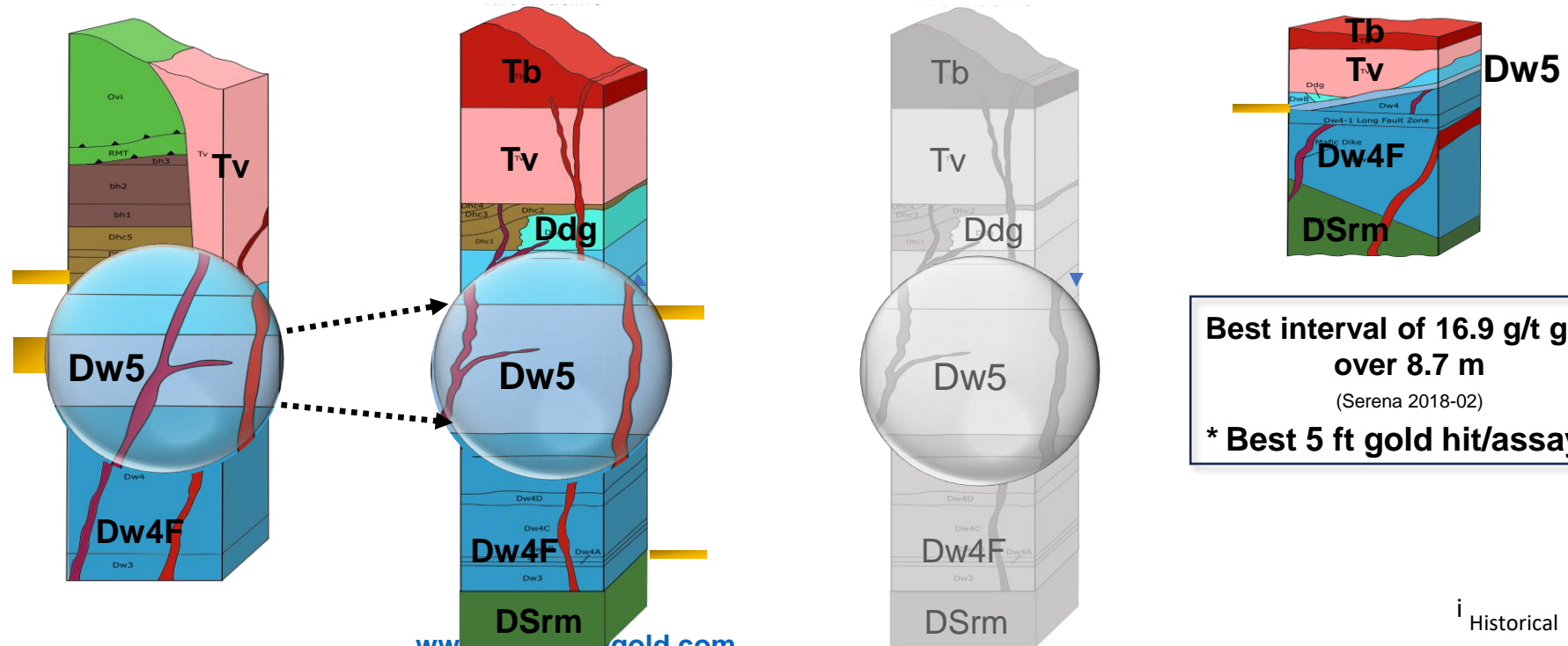


Stratigraphic column comparisons illustrates 'grade' opportunity

Bolded parameters have been confirmed by drilling; otherwise, are projected from CSAMT and other geo-data.

	Goldrush deposit	West-rift target	Lower Mid-rift/South Iceberg target	North Iceberg/Serena zone
Length	~ 4.5 km	~ 2 - 3 km	~ 2	~ 900 m
Width	~ 150 – 375 m	~ 250 - 450 m	~ 250 - 450 m	~ 30 - 100 m
Wenban5 thickness	~ 75 m	~ 75 - 125 m	~ 75 – 100 m	~ 10 - 25 m
Mineralization thickness	~ 25 - 50 m	~ 25 - 70 m	tbd	~ 5 - 15 m
High grade 'hits'	10 - 40 g/t	0.5 – 4 g/t	tbd	10 – 40* g/t³
Average Grade	~ 7 g/t	modest	tbd	~ 3.1 g/t

0 m
175 m
350 m



Gold occurrences

TBD = to be determined

ANTIFORMS

Hanging wall antiforms associated with thrusting; thrusts are typically blind below master thrust faults.

STRUCTURAL INTERSECTIONS

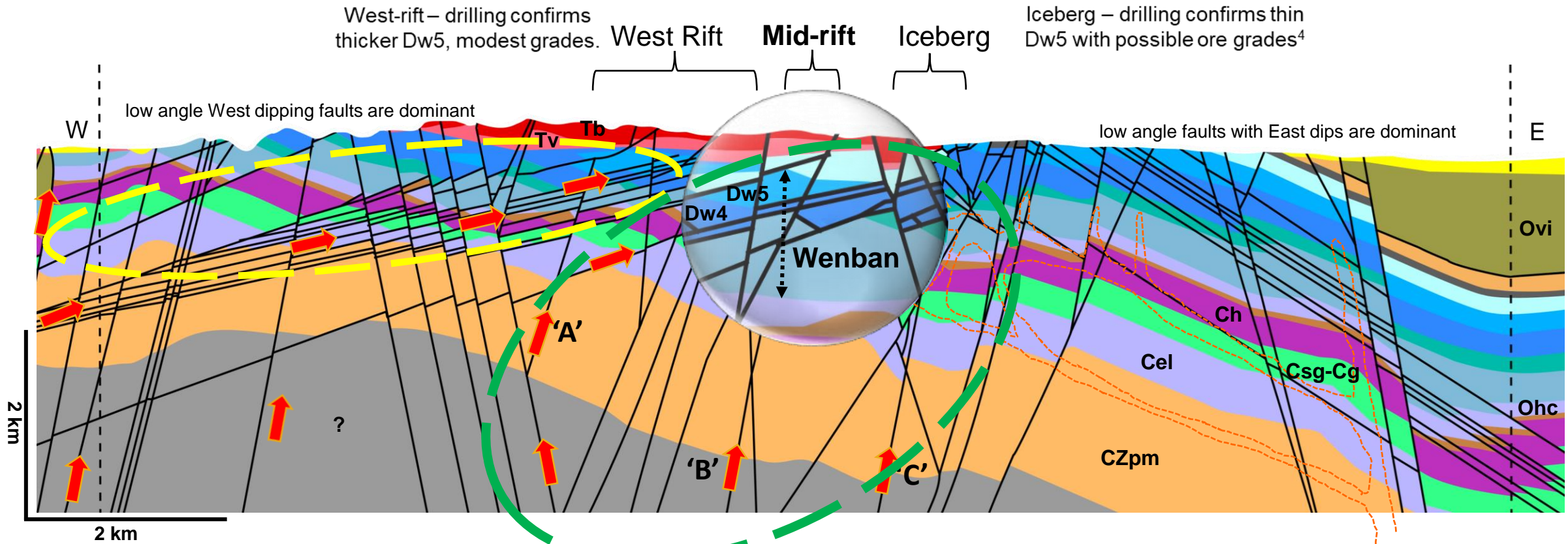
a. In favorable host rocks (Wenban₅) at the intersection of high angle faults, or high and low angle faults.

Red Hill is strongly faulted, with both high and low angle faults and has multiple known host horizons (principally the favorable Wenban₅ and several more).

b. Structural intersection or antiform fold within metamorphic aureole beneath intrusive overhang.



...low and high-angle faults illustrating gold-bearing emplacement fluid flows



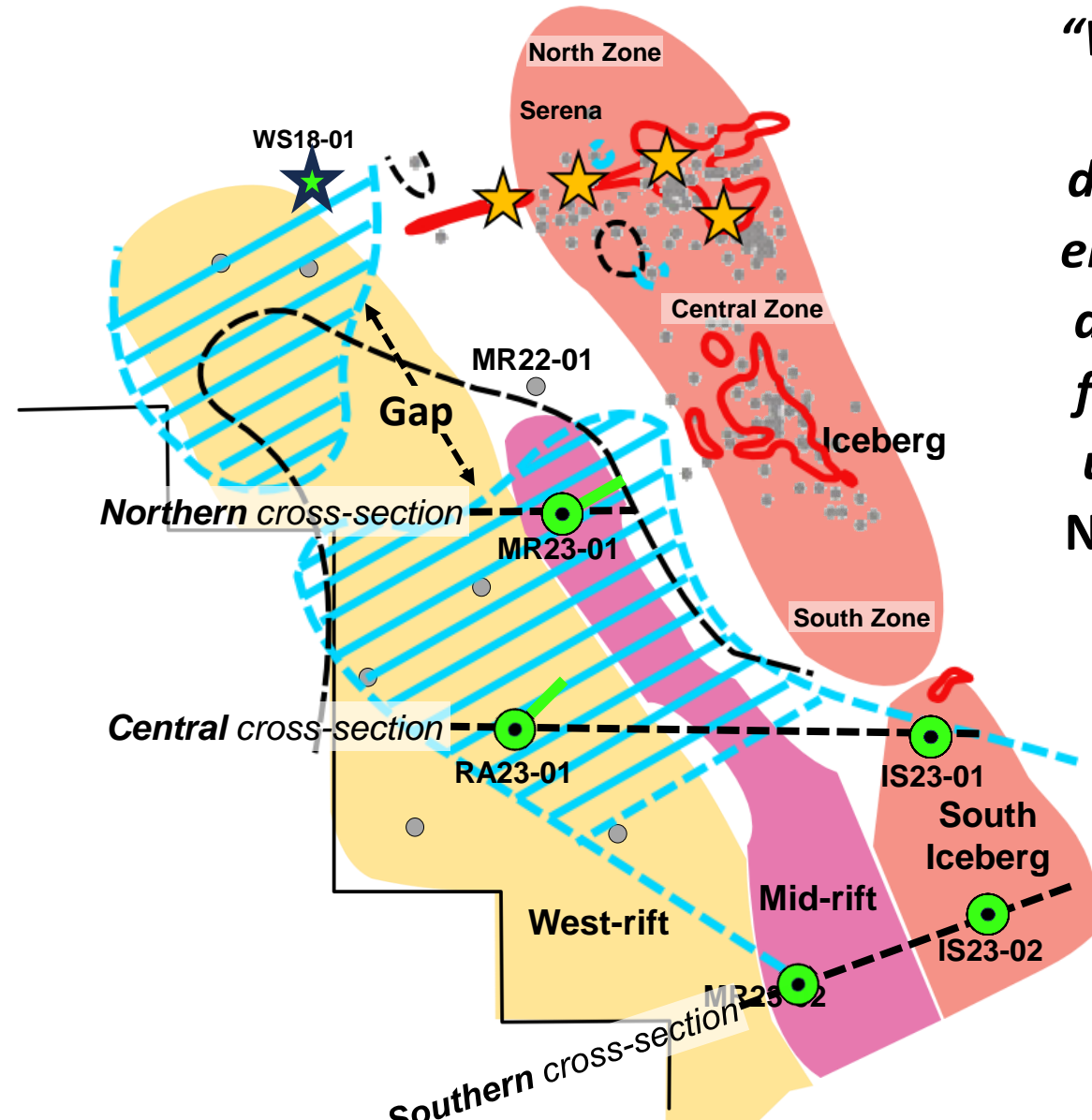
- Known gold zones occur at the intersections of low and high angle fault zones in the Wenban 5 (Dw5), Horse Canyon 2 (Dhc2), Roberts Mountains (DSrm), and Hanson Creek (Ohc) formations.
- Mid-rift target zone is centered along Iceberg-parallel steep faults with Cretaceous diorite dikes, associated metamorphic alteration and anomalous geochemistry from Wenban into Roberts Mountains.
- Preliminary interpretation shows possible Cretaceous diorite intrusive at ~ 800-meter depth.



Deep drilling in West-rift and CSAMT surveys supported projection of thick favorable Dw5 horizons into the Mid-rift target...

Proximity of high-grade in the north Iceberg support projection into Mid-rift target/s

Goldrush 2018, footprint for comparison



“With this configuration of holes, we should hit a discovery hole, or be close enough that the alteration and geochemical analysis from that hole will vector us in the right direction,”
Nancy Richter, exploration team leader.

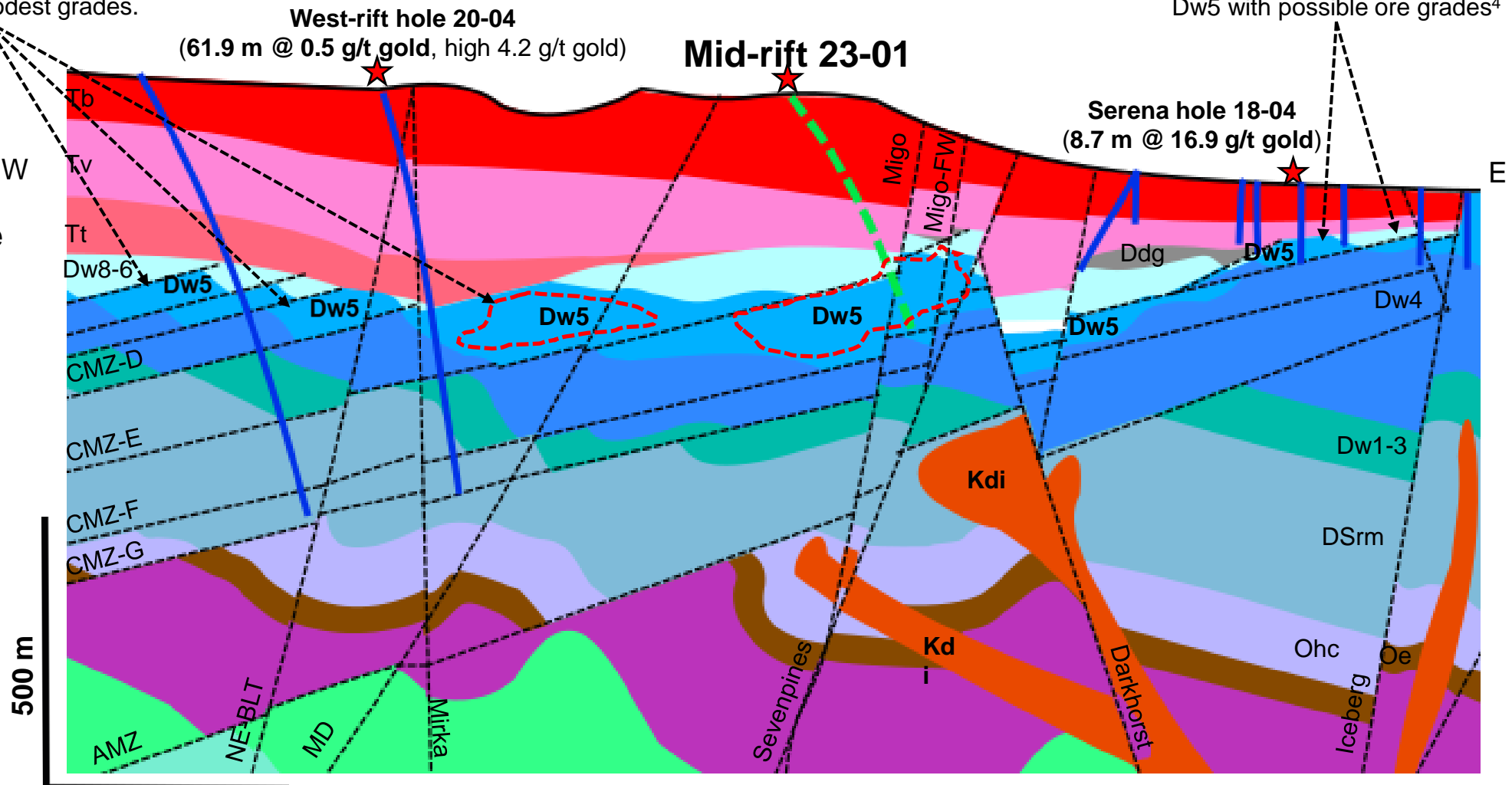


Proposed Mid-rift drill hole (dashed green) with target zones in dashed red.
 (Previous drilling in blue)

Target:
 Intersecting high and low angle faults, within over-thickened package of Dw5

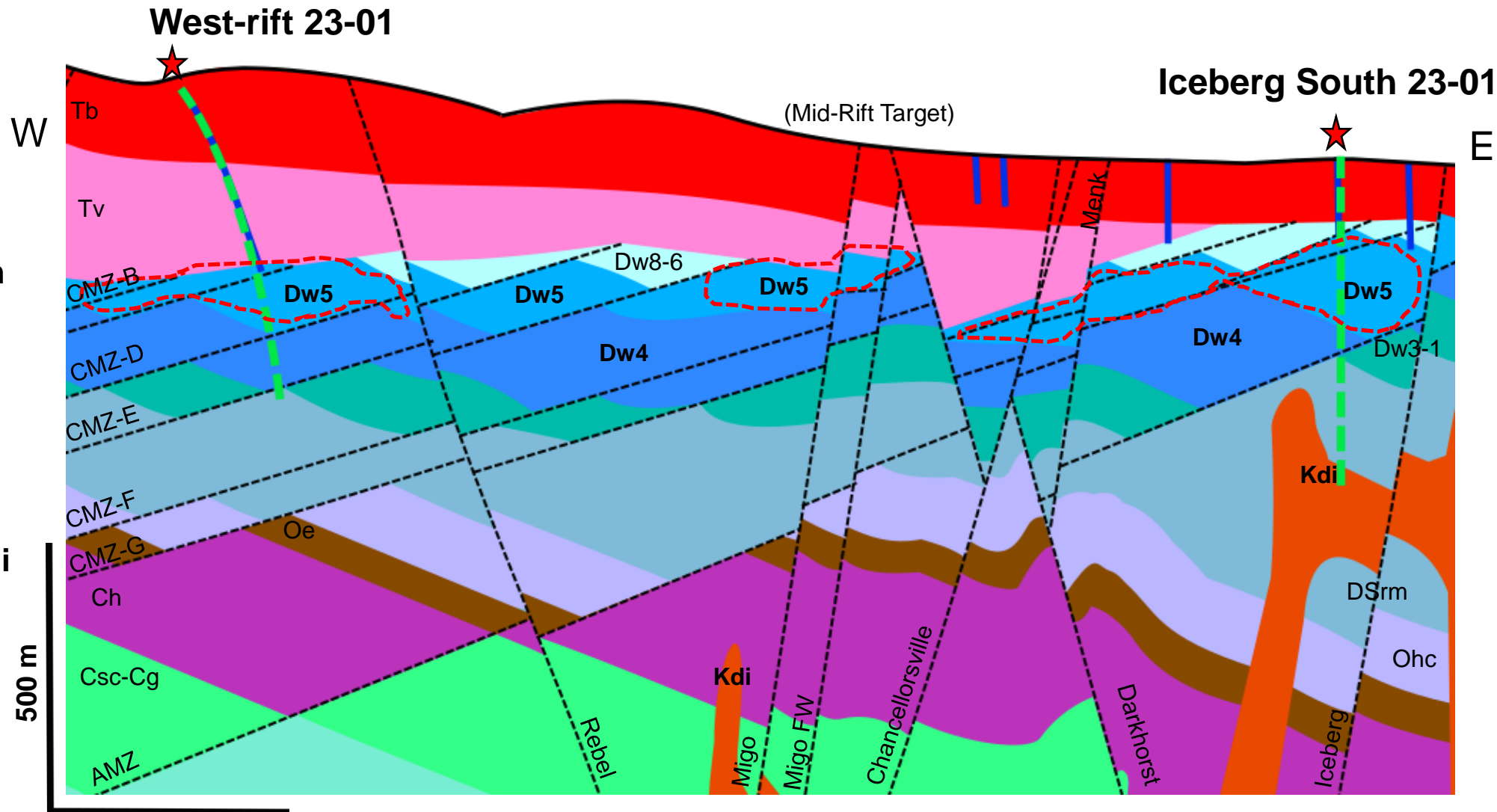
West-rift – drilling confirms thicker Dw5, modest grades.

Iceberg – drilling confirms thin Dw5 with possible ore grades⁴

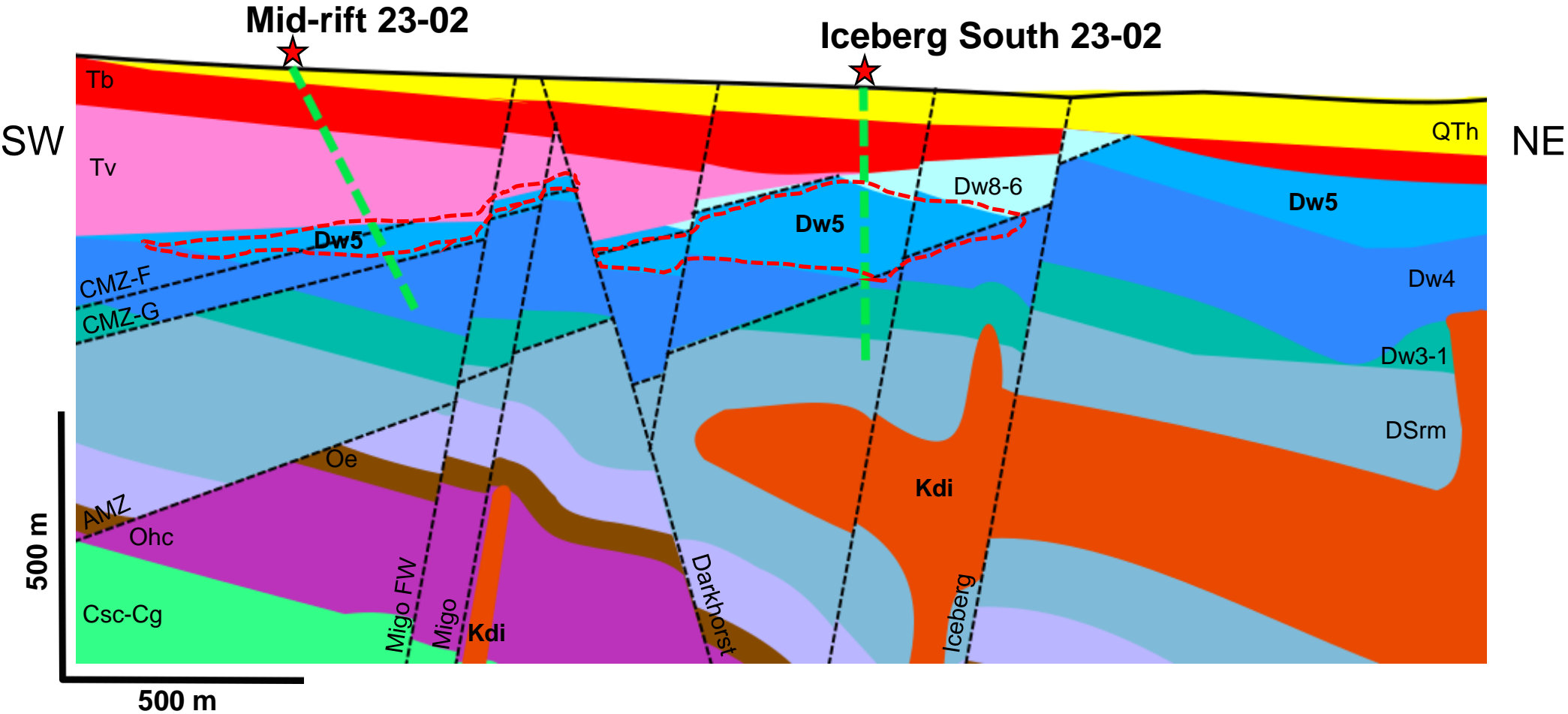


Proposed West-rift and South Iceberg drill holes (dashed green) with target zones in dashed red.

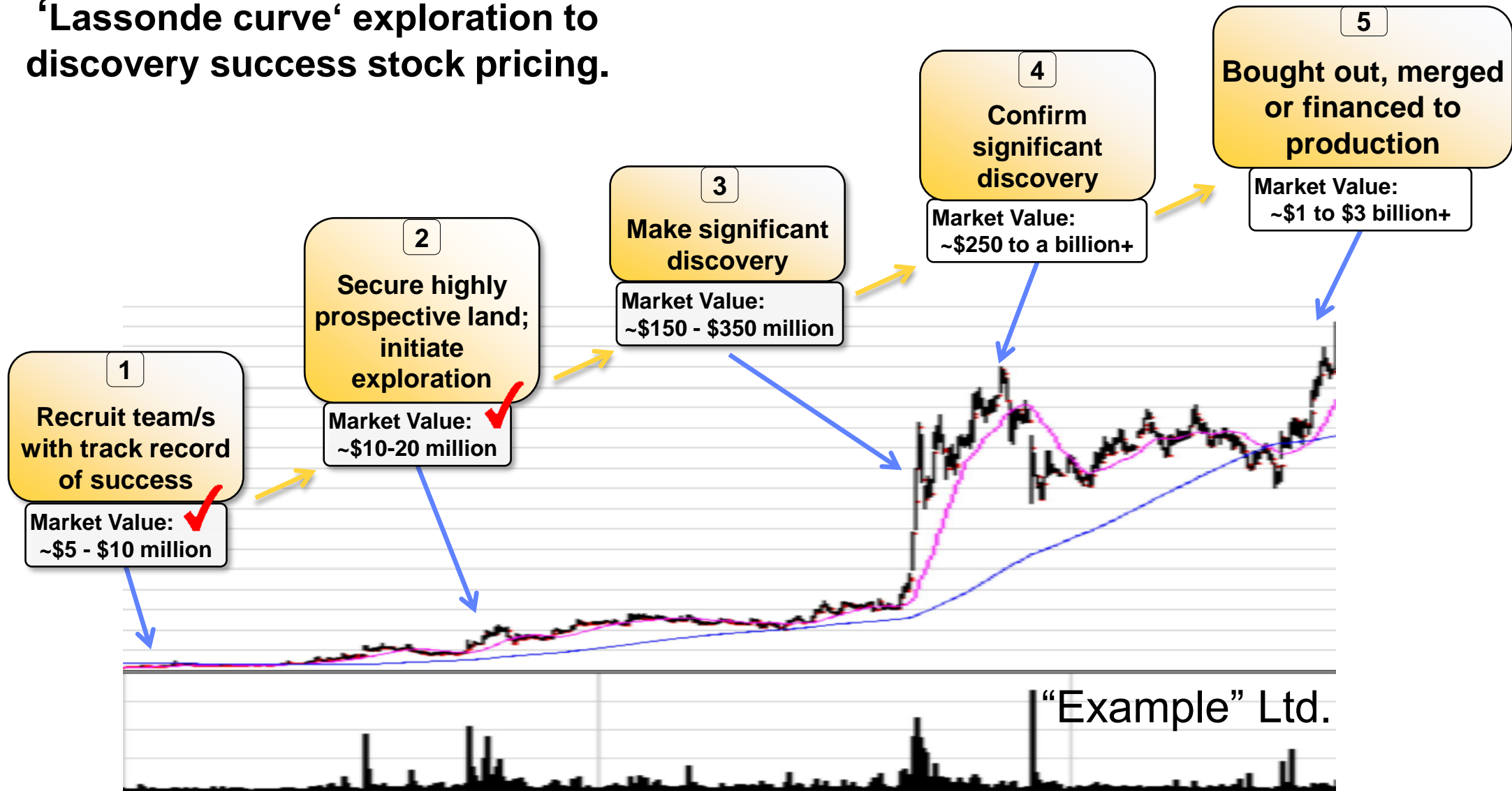
Targets:
W23-01: re-enter previous hole with gold mineralization at bottom and complete to target depth
IS23-01: Over-thickened package of Dw5 cut by low angle faults within metamorphic halo of Kdi



Proposed Mid-rift and South Iceberg drill holes (dashed green) with target zones in dashed red.



‘Lassonde curve’ exploration to discovery success stock pricing.



Capital structure (Cdn \$)	Current shares outstanding	588.85	million
	Proposed funding for drilling program	100.0	million units* @ 2.5 cents
	Current cash balance	~ \$0.75	million
	New cash balance	~ \$2.75 +	million
	New warrants & options balance	202.8 / 37.7	million
	Proceeds from options & warrants on exercise	\$28.3	million
	New fully diluted	929.0	million

****Current 100-million-unit financing is priced at 2.5 cents and consists of one share and one 5 year warrant exercisable at 5 cents.***



Current ownership distribution (estimates only)	Miners	Shares (million)	%
	OceanaGold	49.8	8.5
	Barrick Gold	32.0	5.4
	Institutions – over 15 own NuLegacy: e.g.		
	Crescat Portfolio Management LLC	104.7	17.8
	Sprott Gold Equity Fund	37.9	6.4
	Mackenzie Investment Funds	30.8	5.2
	Public*	~ 274.7	~ 46.7
Insiders and Principals	59.0	10.0%	

* Numerous smaller funds and family offices as well as several hundreds of shareholders have participated.

Analyst coverage	Scarsdale Equities	Mike Niehuser	miken@scarsdale-equities.com
	VSA Capital	Oliver O'Donnell	oodonnell@vsacapital.com



CORPORATE MANAGEMENT

Albert Matter (Cofounder, 2009), CEO, Director, Strategy & Finance

Former investment banker/stockbroker, Co-founder Alamos Gold, Gryphon Gold, NuLegacy Gold Corporation

***Alex Davidson (2013), Chairman, Director, Value Recognition**

Former EVP Barrick Gold, Director, Yamana Gold Inc., Chair, Americas Gold and Silver Corp.

Xavier Wenzel (2022), CFO

CFO and other senior management roles with numerous public companies in North and South America.



NON-EXECUTIVE DIRECTORS

***Roger Steininger (Cofounder, 2009), Director, Exploration, QP**

Discovered Pipeline and Lone Valley mines; Co-Founder NuLegacy Gold.

John Budreski (2018), Director, Investment Banking

Director, Sandstorm Gold Ltd, Executive Chair Morien Resource Corp., EnWave Corporation.

***The other two (of the seven) NuLegacy principals & geo-team who were instrumental in the discovery/expansion of one or more of Nevada's seven Carlin-style gold deposits.**



- 1. Possibility of discovering an elephant sized Carlin-style gold deposit in this or next round of drilling!**
- 2. Incredible enhanced exploration team has significantly advanced the targeting /modeling of the Red Hill geology.**
- 3. Ownership in the best located most prospective gold property in NV, and thereby in the world,**
- 4. Possibility of a mid-tier gold producer providing funding and additional expertise.**
- 5. An option on gold - the 2% royalty that NuLegacy holds on the Red Hill property would become very valuable if, as and when the gold deposit is found.**

What are the risks: please see endnotes.





Mid-rift Anticline target

~ a Goldrush analogue ~

NuLegacy Gold

CORPORATION

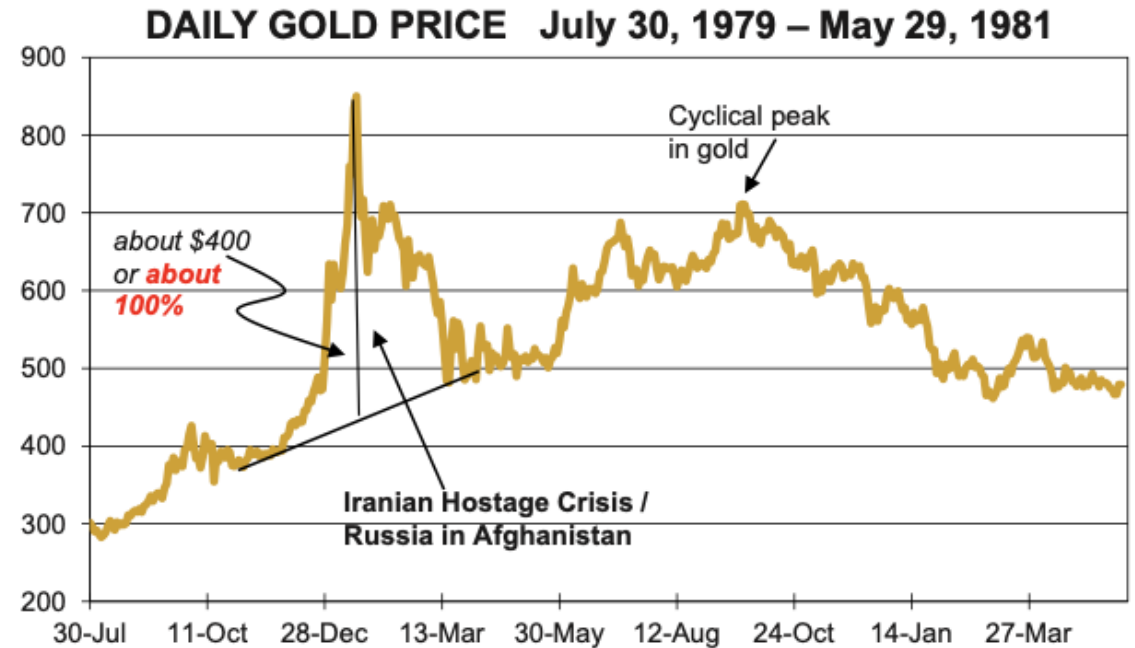
Note:

- The lefthand chart shows that the gold price rose about \$250 after Russia invaded Ukraine [then subsided].
- The gold price doubled during the Iranian Hostage Crisis in January 1980, righthand chart. [then subsided].

From "Mureenbeld & Co. Gold Monitor", by Dr. Martin Mureenbeeld & Chantelle Schieven, October 13, 2023, *Capitalight Research Inc.*



Source: LSEG, Capitalight Research

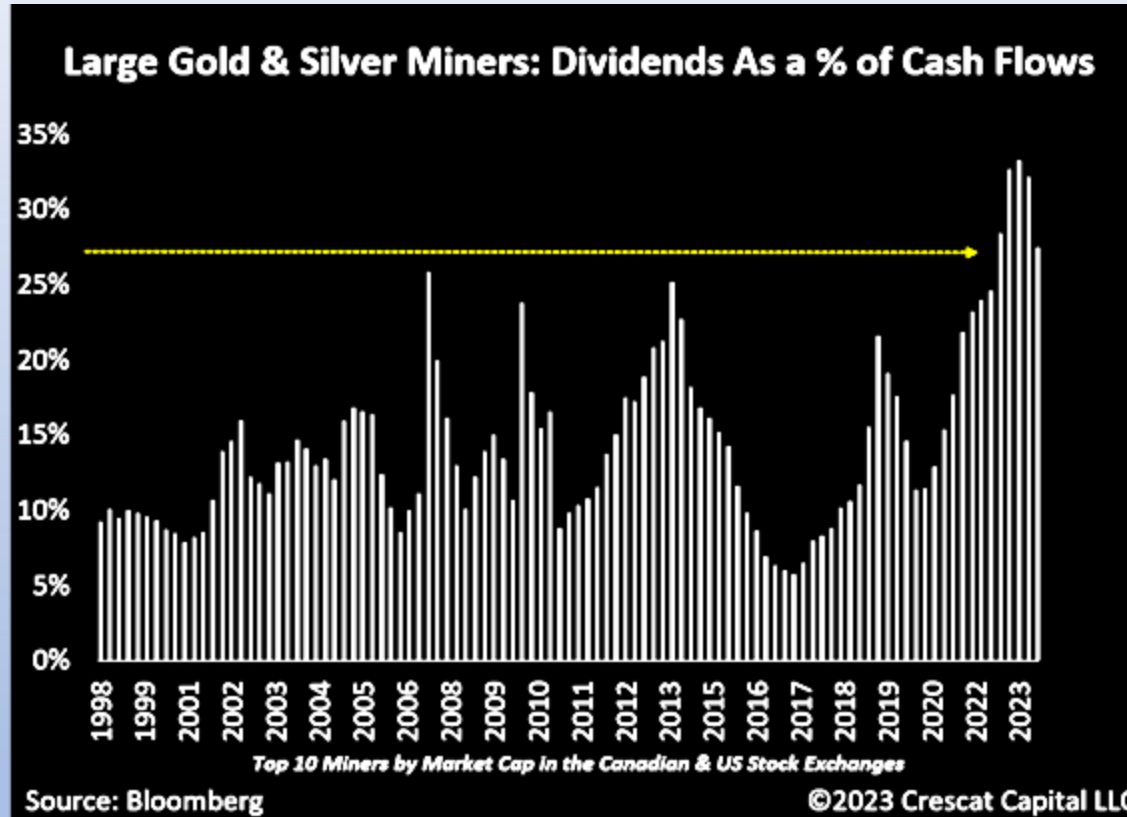


Source: LSEG, Capitalight Research





Miners express confidence in the gold price?



Courtesy of Crescat Capital



NuLegacy Gold
CORPORATION

Discovering gold in Nevada

Inquires to: albert@nuggold.com



1. The structural, stratigraphic and geochemical similarity and proximity of Goldrush to the Rift Anticlines at Red Hill is not necessarily indicative of the gold mineralization at the Rift Anticlines. To date, there are no known National Instrument 43-101 compliant mineral resources or reserves at NuLegacy's Red Hill property and the proposed drill program is an exploratory search for bodies of ore.
2. Currently structured as an underground mine Goldrush contains P&P: 7.8 M oz @ 7.29 g/t; M&I: 8.5 M oz @ 7.07 g/t (inclusive of P&P); and Inferred: 4.5 M oz @ 6.0 g/t (as of December 31, 2021). Source: Corporate presentation of Nevada Gold Mines – Goldrush Underground dated September 22, 2022.
3. The reported intercepts are not necessarily true widths as there is insufficient data currently with respect to the shape of the mineralization to calculate its true orientation. NuLegacy sampling was conducted under the supervision of the Company's project geologists and the chain of custody from the project to the sample preparation facility were continuously monitored. The samples were delivered to American Assay Lab or ALS laboratories' preparation facility in Nevada and sufficient commercially prepared standards, blanks or certified reference materials were inserted to assure quality analytical results. The samples were crushed, pulverized and sample pulps were analyzed using industry standard fire assay methods. Data verification of the analytical results included a statistical analysis of the standards, blanks and reference materials that must pass certain parameters for acceptance to ensure accurate and verifiable results. Holes RHB-40 and RHB-58 are historical in nature, have not been verified by NuLegacy and should not be relied upon. They are presented as an indication of potential gold mineralization and as a guide to future exploration.
4. Mineralized material/deposits that are not mineral reserves do not have demonstrated economic viability, are considered too speculative geologically to have the economic considerations applied to them, and may be materially affected by environmental, permitting, legal, title, socio-political, marketing, and other relevant issues. There are no mineral reserves at Red Hill.
5. This interpretation is conceptual in nature and not necessarily indicative of the actual thickness of Wenban5 or other favorable host horizons, possible Cretaceous diorite intrusive, intersection of high-angle faults and low-angle thrust faults or the existence of axial crests within the Rift Anticline targets; pending confirmation by drilling.
6. This chart is conceptual in nature and not necessarily indicative of NuLegacy's future potential value or discovery success.

October 2023



1. The structural, stratigraphic and geochemical similarity and proximity of Goldrush to the Rift Anticlines at Red Hill is not necessarily indicative of the gold mineralization at the Rift Anticlines. To date, there are no known National Instrument 43-101 compliant mineral resources or reserves at NuLegacy's Red Hill property and the proposed drill program is an exploratory search for bodies of ore.
2. Currently structured as an underground mine Goldrush contains P&P: 7.8 M oz @ 7.29 g/t; M&I: 8.5 M oz @ 7.07 g/t (inclusive of P&P); and Inferred: 4.5 M oz @ 6.0 g/t (as of December 31, 2021). Source: Corporate presentation of Nevada Gold Mines – Goldrush Underground dated September 22, 2022.
3. The reported intercepts are not necessarily true widths as there is insufficient data currently with respect to the shape of the mineralization to calculate its true orientation. NuLegacy sampling was conducted under the supervision of the Company's project geologists and the chain of custody from the project to the sample preparation facility were continuously monitored. The samples were delivered to American Assay Lab or ALS laboratories' preparation facility in Nevada and sufficient commercially prepared standards, blanks or certified reference materials were inserted to assure quality analytical results. The samples were crushed, pulverized and sample pulps were analyzed using industry standard fire assay methods. Data verification of the analytical results included a statistical analysis of the standards, blanks and reference materials that must pass certain parameters for acceptance to ensure accurate and verifiable results. Holes RHB-40 and RHB-58 are historical in nature, have not been verified by NuLegacy and should not be relied upon. They are presented as an indication of potential gold mineralization and as a guide to future exploration.
4. Mineralized material/deposits that are not mineral reserves do not have demonstrated economic viability, are considered too speculative geologically to have the economic considerations applied to them, and may be materially affected by environmental, permitting, legal, title, socio-political, marketing, and other relevant issues. There are no mineral reserves at Red Hill.
5. This interpretation is conceptual in nature and not necessarily indicative of the actual thickness of Wenban5 or other favorable host horizons, possible Cretaceous diorite intrusive, intersection of high-angle faults and low-angle thrust faults or the existence of axial crests within the Rift Anticline targets; pending confirmation by drilling.
6. This chart is conceptual in nature and not necessarily indicative of NuLegacy's future potential value or discovery success.

October 2023

